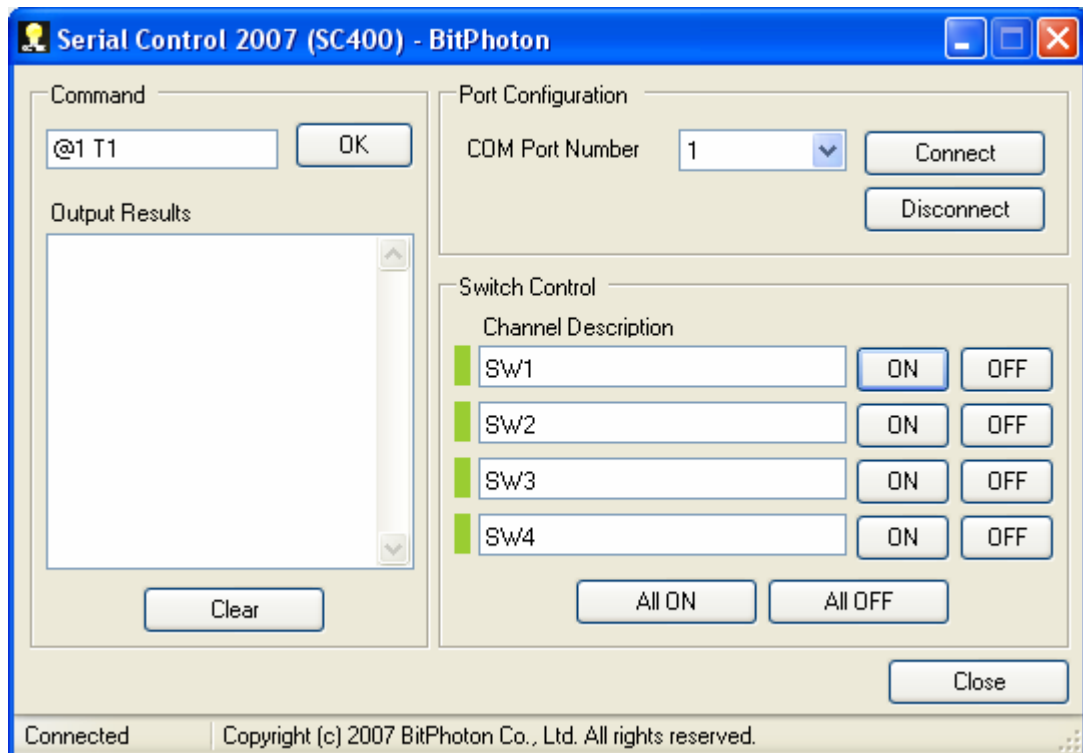


## SC-400

1. Click Setup.exe to install program
2. Click serial controller, in case, program doesn't allow to continue. Please click Microsoft.Net Frame work first.
3. Follow up the instruction until completed installation.
4. Connect 12VDC at least 1A to board
5. Connect board via RS232 to COM port of PC or Laptop
6. Run program -> Serial Control SC400



7. Left side is the part which you can control the board by using the command. Right side is the part which you just click the button to control the board.
8. Select COM port and click connect / click Disconnect when you want to disconnect software and the board
9. You will see SW1 to SW4, there are relay number, example SW1 is CH1 Click ON button to turn on each Relay . and OFF to turn off Relay In case, you want to turn on or turn off in the same time, you can click ALL ON to turn all Relay to on and ALL OFF to turn all relay to off.
10. In case, you want to use command, just key the command and click ok, The status will show in Output Results field.

### Commmand

@n Cxx<CR>

N = address, default = 1 example @1

C = Command

Xx = Parameter of each command

<CR> = Press Enter

Example :

@1 N0 will be the same as @1 n0

This board has 5 commands, there are N , F, T, R

***N= Turn on***

Nx

x are 0-4 ( 0 is to turn on all Relay ), 1 is Relay CH1, 2 is Relay CH2 ...

@1 n0<CR> -> Turn on all relay

@1 n3<CR> -> Turn on Relay CH3

***F=Turn off***

@1 f0<CR> -> Turn off all relay

@1 f3<CR> -> Turn off Relay CH3

***T=Converse the status***

@1 T0<CR> In case, All Relay are on status, after this command all relay will be off .

@1 T1<CR> Only Relay CH1 will be conversed, other Relay will not be changed

***R=Command all relay in parallel mode***

xx	CH4	CH3	CH2	CH1
00	0	0	0	0
01	0	0	0	1
02	0	0	1	0
03	0	0	1	1
04	0	1	0	0
05	0	1	0	1
06	0	1	1	0
07	0	1	1	1
08	1	0	0	0
09	1	0	0	1
0A	1	0	1	0
0B	1	0	1	1
0C	1	1	0	0
0D	1	1	0	1
0E	1	1	1	0
0F	1	1	1	1

@1 R00<CR> -> Turn on all CH

@1 R07<CR> -> Turn on CH1 / CH2 / CH3

Example how to use other program to control this board

1. Set COM port at Baud 9600, 8 Data bits, 1 stop bit and no parity
2. Open Port
3. Send string command example : @1 n1 following by carriage return <CR>

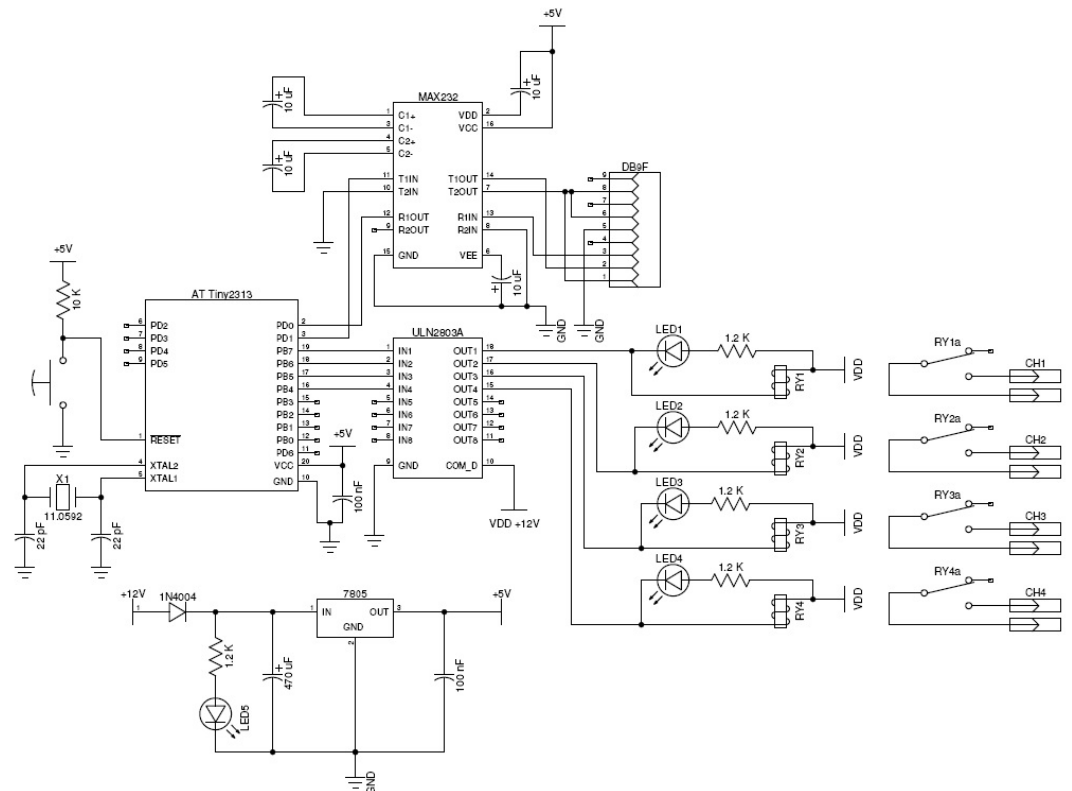
**Example :** Qbasic on DOS

OPEN "COM1:9600,N,8,1" FOR RANDOM AS 1

PRINT#1, "@1 N1"

CLOSE#1

4-CHANNEL SERIAL CONTROL SC400/SPC-1



Manual by [www.bangkoktoshop.com](http://www.bangkoktoshop.com)